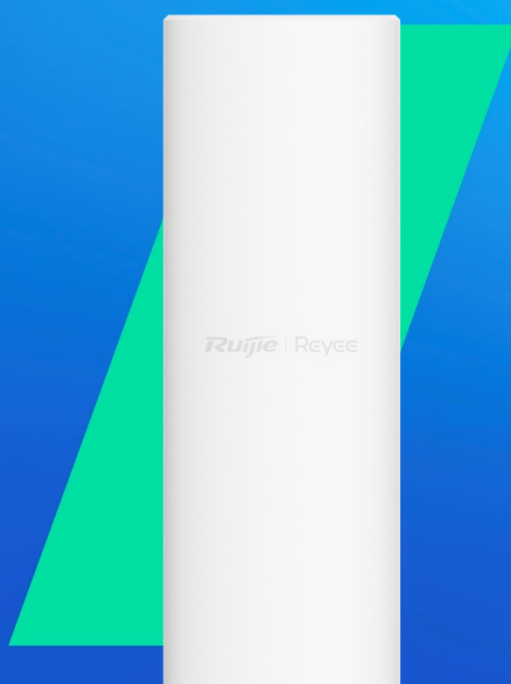


RG-RAP62-OD

AX3000 Wi-Fi 6 Indoor/Outdoor Versatile Access Point



/ Highlights

- AX3000 Versatile Outdoor/Indoor Mesh AP for Villas and Retail Businesses
- Wall or Pole Mounting to Fit in Any Location
- IP65 Weatherproof Rating, Delivering Consistent Protection and Signal Stability
- Built-in Antennas for Coverage Where Needed
- Tailored for Retail Businesses with Reyee Mesh, Standalone Portal, and AI Roaming

Features

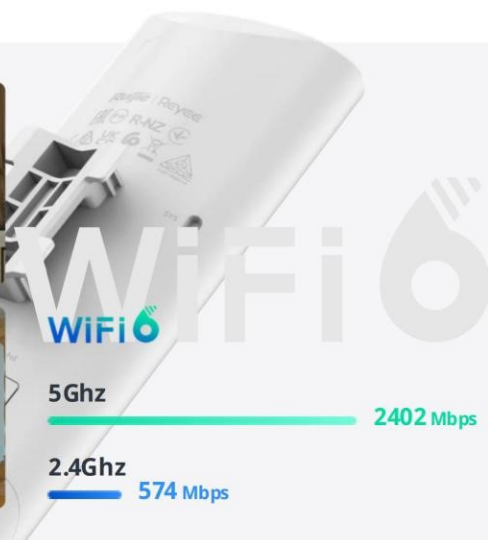
/ Highlight Features



Featuring A Sleek Design for Deployment Indoors and Outside

Fast & Stable Wi-Fi 6 Speeds
Ideal for Open Space Business
Outdoor Wi-Fi Coverage

More Devices and Wider Coverage
This is what your house's Wi-Fi should be

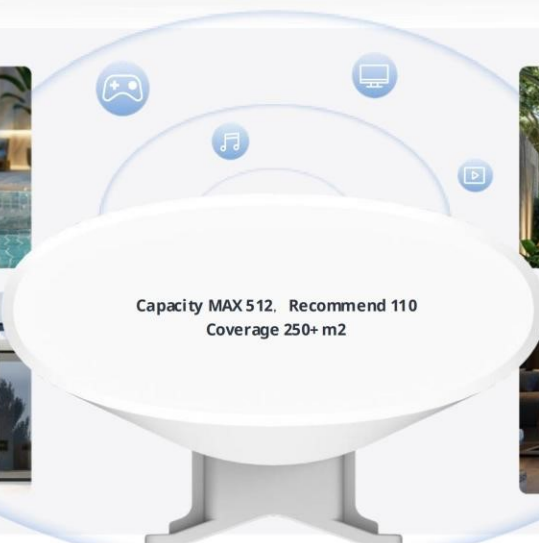


Highlight Features

Featuring A Sleek Design for Deployment Indoors and Outside

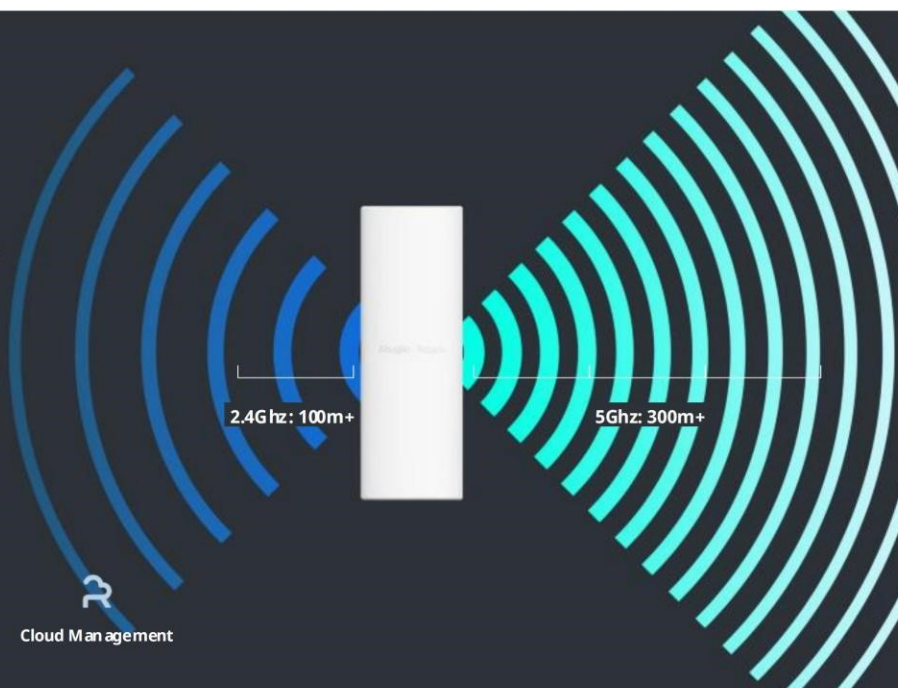
Fast & Stable Wi-Fi 6 Speeds
Ideal for Open Space Business
Outdoor Wi-Fi Coverage

More Devices and Wider Coverage
This is what your house's Wi-Fi should be



The Way We Made Reliable & Long-Range Wi-Fi for Coverage

Professional build-in antennas equipped with Enterprise-grade high-gain amplifiers and utilized Wi-Fi 6 technology to make the whole device perform perfectly in coverage and quality Wi-Fi delivered.



Reyee Mesh



IP65



Smart Build-in Antennas

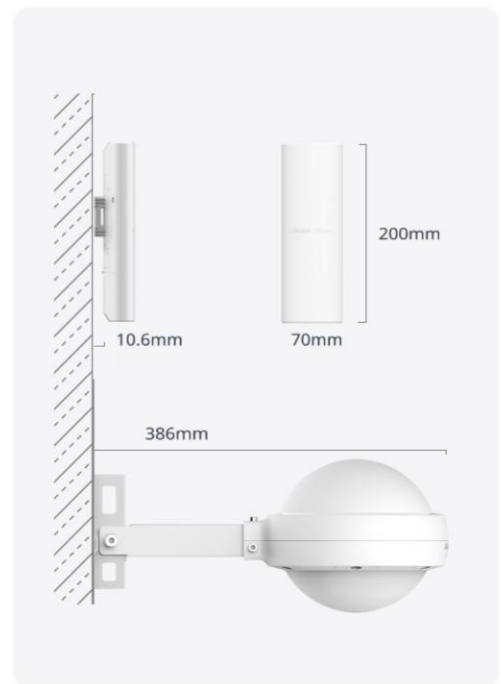
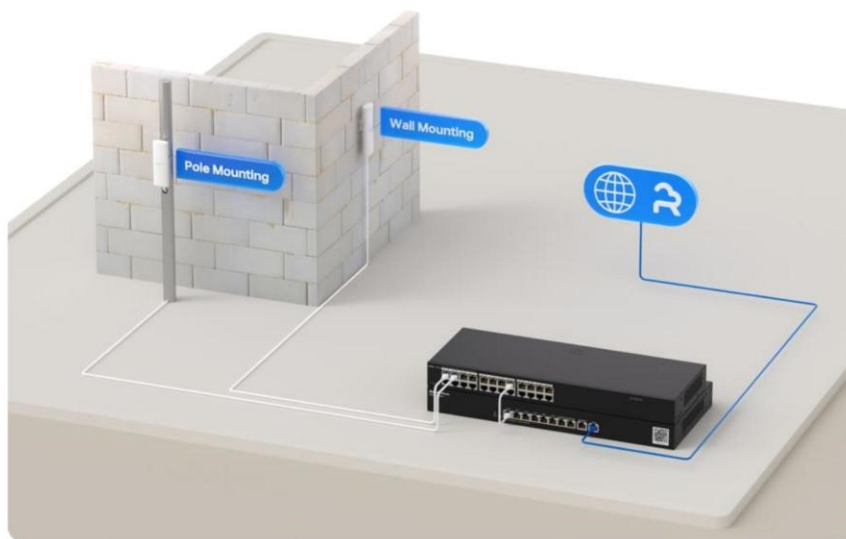


Cloud Management

/ Highlight Features

Refined Appearance

Infinite Art Possible, Unleash limited Space



Consistent Protection, Stable Signal

Weatherproof - Rated as IP65 during Ingress Protection Testing



Raining-Proof

(Within a distance of 2.5 meters) strongly sprayed by water with a flow rate of 12.5 ± 0.625 (L/min)



Dust-Proof

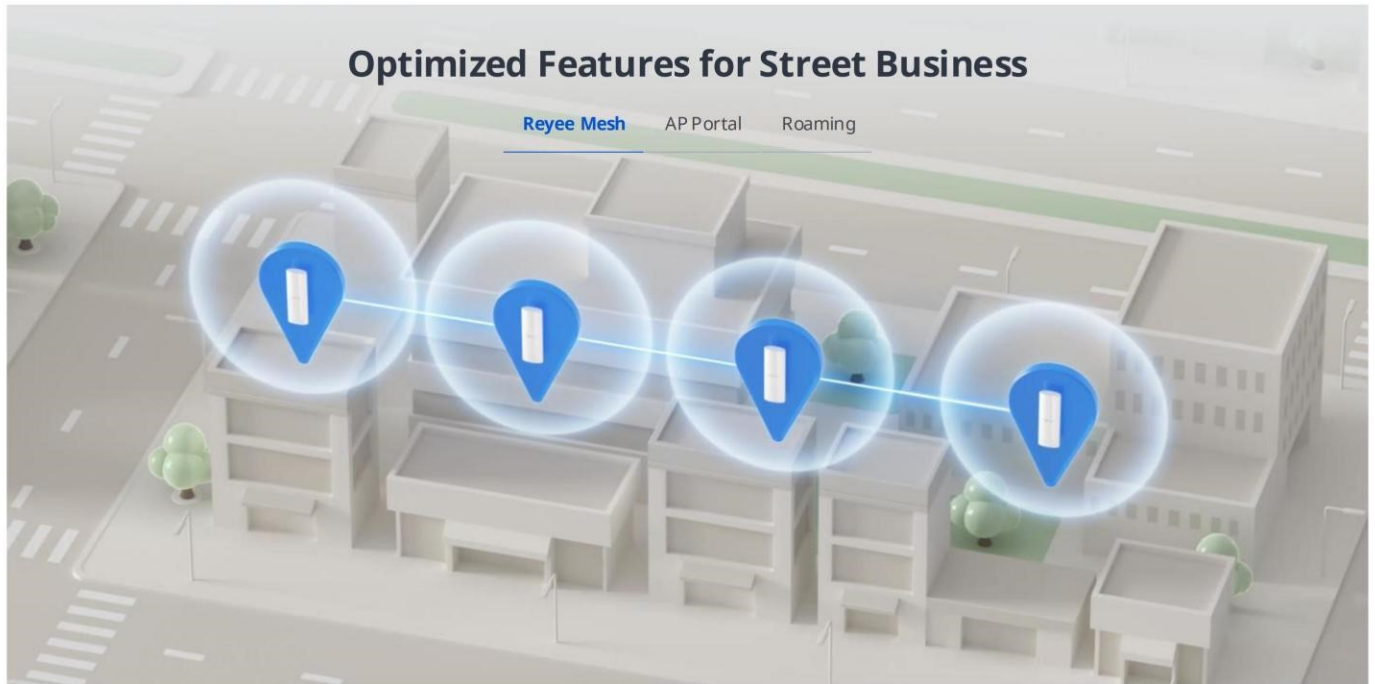
Highest Protection to prevent tiny dust into the inside of device



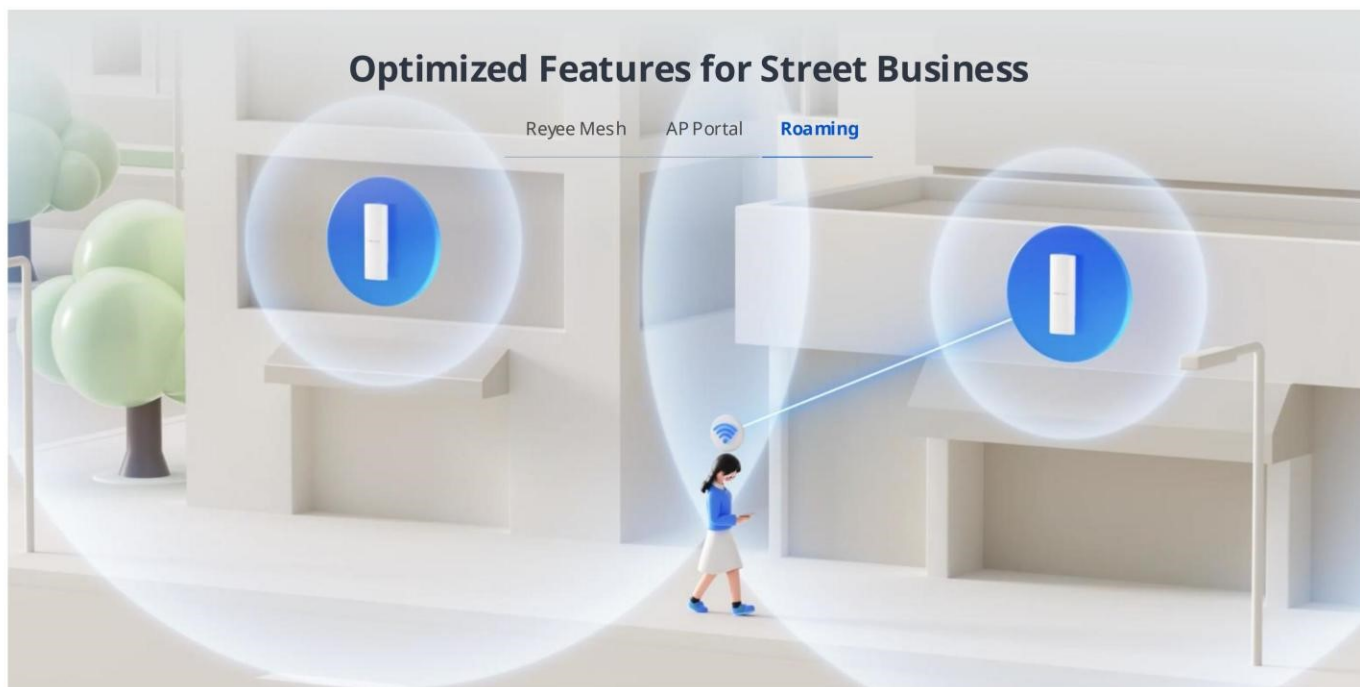
Surge-Protection

4kV Lightning Protection
15kV ESD Protection

/ Highlight Features

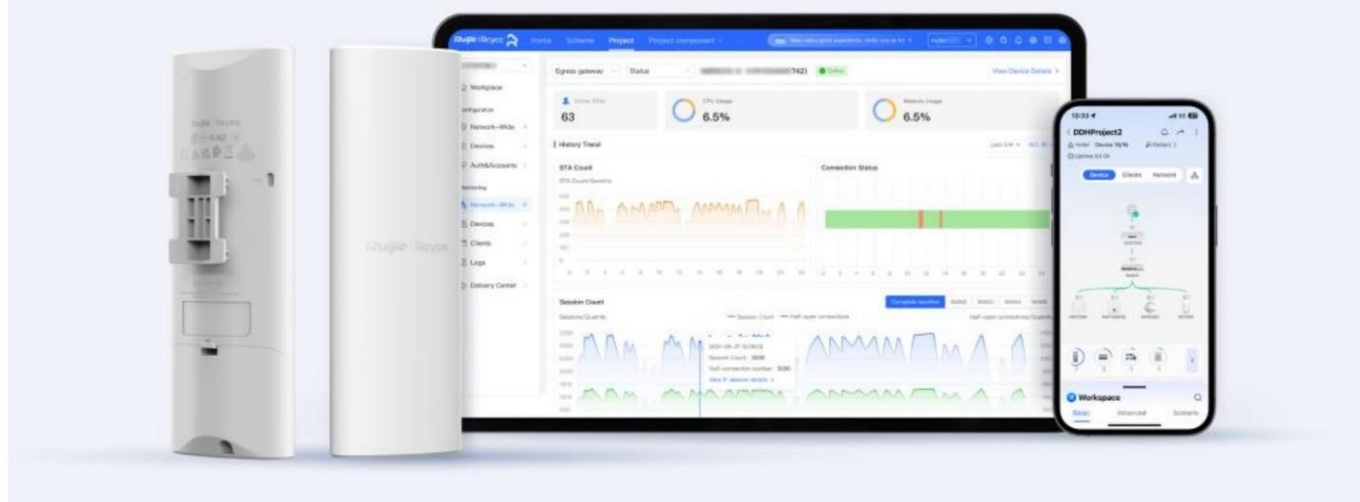


Highlight Features



Cloud, Make Your Business Easy

- Self-Organizing Network
- Centralized network management
- Cloud portal authentication
- Remote monitoring and maintenance



/ Product Information

Model	RG-RAP62-OD
Product Type	Outdoor AP

/ Hardware Specifications

Model	RG-RAP62-OD
Wi-Fi Radio	
6 GHz Wi-Fi	No
5 GHz Wi-Fi	Wi-Fi 4 (IEEE 802.11a/n) Wi-Fi 5 (IEEE 802.11ac) Wi-Fi 6 (IEEE 802.11ax)
2.4 GHz Wi-Fi	Wi-Fi 4 (IEEE 802.11b/g/n) Wi-Fi 6 (IEEE 802.11ax)
Operating band	IEEE 802.11b/g/n/ax, 2.400 GHz to 2.4835 GHz IEEE 802.11a/n/ac/ax, 5.150 GHz to 5.350 GHz, 5.470 GHz to 5.725 GHz, 5.725 GHz to 5.850 GHz Note: Available bands vary with countries and regions. To use the preceding frequency bands, ensure that your country or region supports these frequency bands.
Radio design	Dual-radio 4 spatial streams • 2.4 GHz: 2 x 2, MU-MIMO • 5 GHz: 2 x 2, MU-MIMO
FEM	2.4 GHz: 2 x eFEM 5 GHz: 3 x eFEM
6 GHz channel width	No
5 GHz channel width	Auto/20/40/80/160 MHz
2.4 GHz channel width	Auto/20/40 MHz
Maximum wireless data rate	2974 Mbps
6 GHz wireless data rate	No
5 GHz wireless data rate	2401 Mbps
2.4 GHz wireless data rate	573 Mbps

/ Hardware Specifications

Model	RG-RAP62-OD
Maximum transmit power	<p>Frequency bands and maximum Effective Isotropic Radiated Power (EIRP):</p> <p>Note: Country specific restrictions apply.</p> <p>European Union & United Kingdom:</p> <p>2400–2483.5 MHz, EIRP ≤ 20 dBm</p> <p>5470–5725 MHz, EIRP ≤ 30 dBm</p> <p>United States:</p> <p>2400–2483.5 MHz, max output power ≤ 30 dBm & EIRP ≤ 36 dBm</p> <p>5150–5250 MHz, max output power ≤ 30 dBm & EIRP ≤ 36 dBm</p> <p>5250–5350 MHz, max output power < 24 dBm & EIRP ≤ 30 dBm</p> <p>5470–5725 MHz, max output power < 24 dBm & EIRP ≤ 30 dBm</p> <p>5725–5850 MHz, max output power ≤ 30 dBm & EIRP ≤ 36 dBm</p> <p>Myanmar:</p> <p>2400–2483.5 MHz, EIRP ≤ 23 dBm</p> <p>5725–5825 MHz, EIRP ≤ 30 dBm</p> <p>Thailand:</p> <p>2400–2483.5 MHz, EIRP ≤ 20 dBm</p> <p>5470–5725 MHz, EIRP ≤ 30 dBm</p> <p>5725–5825 MHz, EIRP ≤ 30 dBm</p> <p>Indonesia:</p> <p>2400–2483.5 MHz, EIRP ≤ 36 dBm</p> <p>5725–5825 MHz, EIRP ≤ 36 dBm</p> <p>Egypt:</p> <p>2400–2483.5 MHz, EIRP ≤ 20 dBm</p> <p>5150–5350 MHz, EIRP ≤ 23 dBm</p> <p>Vietnam:</p> <p>2400–2483.5 MHz, EIRP ≤ 23 dBm</p> <p>5150–5350 MHz, EIRP ≤ 23 dBm</p> <p>5470–5725 MHz, EIRP ≤ 30 dBm</p> <p>5725–5850 MHz, EIRP ≤ 30 dBm</p>
Maximum transmit power (6 GHz)	No
Maximum transmit power (5 GHz)	<p>Combined power: 27.7 dBm (single-stream power: 23 dBm)</p> <p>Note: The transmit power varies according to regulations in different countries and regions.</p>
Maximum transmit power (2.4 GHz)	<p>Combined power: 26 dBm (single-stream power: 23 dBm)</p> <p>Note: The transmit power varies according to regulations in different countries and regions.</p>
Coverage range	<p>5 GHz max: 300 m (984.25 ft.)</p> <p>2.4 GHz max: 100 m (328.08 ft.)</p> <p>5 GHz recommended: 200 m (656.17 ft.)</p> <p>2.4 GHz recommended: 50 m (164.04 ft.)</p> <p>Note: The data is obtained in an ideal environment without</p>

/ Hardware Specifications

Model	RG-RAP62-OD
	obstruction. The signal coverage radius depends on client performance and environmental interference.
Modulation	OFDM: BPSK @ 6/9 Mbps, QPSK @ 12/18 Mbps, 16-QAM @ 24 Mbps, 64-QAM @ 48/54 Mbps DSSS: DBPSK @ 1 Mbps, DQPSK @ 2 Mbps, and CCK @ 5.5/11 Mbps MIMO-OFDM: BPSK, QPSK, 16-QAM, 64-QAM, 256-QAM and 1024-QAM OFDMA
Receive sensitivity	11b: -91 dBm (1 Mbps), -88 dBm (5.5 Mbps), -85 dBm (11 Mbps) 11a/g: -89 dBm (6 Mbps), -80 dBm (24 Mbps), -76 dBm (36 Mbps), -71 dBm (54 Mbps) 11n: -83 dBm (MCS0), -65 dBm (MCS7), -83 dBm (MCS8), -65 dBm (MCS15) 11ac: 20 MHz: -83 dBm (MCS0), -57 dBm (MCS9) 11ac: 40 MHz: -79 dBm (MCS0), -57 dBm (MCS9) 11ac: 80 MHz: -76 dBm (MCS0), -51 dBm (MCS9) 11ax: 20 MHz: -85 dBm (MCS0), -58 dBm (MCS11) 11ax: 40 MHz: -82 dBm (MCS0), -54 dBm (MCS11) 11ax: 80 MHz: -79 dBm (MCS0), -52 dBm (MCS11)
Antenna	
Antenna	5 GHz: 1 built-in omnidirectional antenna Integrated 2.4 GHz and 5 GHz: 2 built-in omnidirectional antennas
Antenna horizontal orientation	No
Antenna vertical orientation	No
Antenna gain (6 GHz)	No
Antenna gain (5 GHz)	6.50 dBi
Antenna gain (2.4 GHz)	4.00 dBi
Dimensions and Weight	
Product dimensions (W x D x H)	70 mm x 35 mm x 200 mm (2.76 in. x 1.38 in. x 7.87 in.) (excluding the mounting bracket)
Color	White
Weight	≤ 0.4 kg (0.88 lbs.) (without packaging materials)
Shipping weight	≤ 0.57 kg (1.26 lbs.)

/ Hardware Specifications

Model	RG-RAP62-OD
Port Specifications	
Number of 10/100/1000BASE-T ports	1
Reset button	1
LEDs	1 x system status LED
Power Supply and Consumption	
Power supply	PoE/PoE+
Local power supply	No
Dimensions of the DC connector	No
PoE In standard	<ul style="list-style-type: none">• IEEE 802.3af (PoE) Note: Radio transmission and reception is limited to 2T2R at 2.4 GHz and 2T3R at 5 GHz, and the wireless rate at 5 GHz is 60% of the original rate. <ul style="list-style-type: none">• IEEE 802.3at (PoE+)
Passive PoE power supply	Yes, 24 V passive PoE injector
PoE budget	No
Maximum power consumption	16 W
Environment and Reliability	
Operating temperature	−30°C to +65°C (−22°F to +149°F)
Storage temperature	−40°C to +85°C (−40°F to +185°F)
Operating humidity	0% RH to 100% RH (non-condensing)
Storage humidity	0% RH to 100% RH (non-condensing)
Mounting options	Wall/Pole
IP rating	IP65
Surge protection	Ethernet port: ±4 kV for common mode
MTBF	400,000 hours
Certification and Regulatory Compliance	

/ Hardware Specifications

Model	RG-RAP62-OD
RoHS	Yes
Safety compliance	EN 62368-1
EMC	EN 55032 EN 55035 EN 61000-3-3 EN 61000-3-2 EN 301489-1 EN 301489-3 EN 301489-17
RF	EN 300 328 EN 301 893 EN 300 440
Certification	CE, FCC, CB, ISED, cTUVus
System Specifications	
Flash memory	128 MB
RAM	512 MB DDR3

Software Specifications

Model	RG-RAP62-OD
Basic Configurations	
AP mode	Yes
Routing mode	Yes
Internet access mode	Static IP address Static IPv6 address Dynamic IP address Dynamic IPv6 address PPPoE
Interface	
IPTV transparent transmission	No
Ethernet Interface	
PPPoE clients	Yes
Ethernet Switching	
IEEE 802.1Q VLAN	Yes
WLAN	
Maximum number of associated wireless clients	64 (2.4 GHz) 512 (5 GHz) 512 (2.4 GHz and 5 GHz enabled)
Recommended number of associated wireless clients	<ul style="list-style-type: none">● Support for IEEE 802.11ax and 160 MHz: 16 (2.4 GHz) 94 (5 GHz) 110 (2.4 GHz and 5 GHz enabled)● Support for IEEE 802.11ax and 80 MHz: 16 (2.4 GHz) 64 (5 GHz) 80 (2.4 GHz and 5 GHz enabled)<ul style="list-style-type: none">● Support for IEEE 802.11ac: 8 (2.4 GHz) 32 (5 GHz) 40 (2.4 GHz and 5 GHz enabled)
Maximum number of SSIDs	8
Radio-based client limiting	Yes
Layer 2 isolation	Yes

Software Specifications

Model	RG-RAP62-OD
OFDMA	Yes
WMM	Yes
DFS	Yes
MLO	No
4K-QAM	No
Different SSIDs for the same VLAN	Yes
Enabling/Disabling MLO	No
AP load balancing	Yes
Beamforming	Yes
802.11k/v roaming	Yes
Fast transition (802.11r)	Yes
Layer 2 roaming	Yes
Layer 3 roaming	Yes
AI roaming	Yes
PSK authentication	Yes
Static allowlist	Yes
Adjusting the transmit power for beacon and probe frames	Yes
Encryption mode (WPA-PSK, WPA2-PSK, WPA/WPA2-PSK)	Yes
OWE (Enhanced Open) WPA3-SAE WPA2-PSK/WPA3-SAE	Yes
Number of blocklists and allowlists based on MAC addresses (single SSID)	256
Number of global blocklists/allowlists	256

Software Specifications

Model	RG-RAP62-OD
Mesh management	Yes
AP Mesh	Yes
AP portal authentication	Yes
Maximum number of devices that can be managed	300
One-Click Network Optimization	Yes
Static blocklist	Yes
IP Service	
ARP binding	Yes
IPv4 ping	Yes
IPv6 ping	Yes
Traceroute	Yes
Static/Dynamic NAT	Yes
DHCP server	Yes
Authentication	
802.1X authentication	Yes
Network Management and Monitoring	
Wireless repeater mode	Yes
Web login information	Single-device login address: 10.44.77.254 Network-wide login address: 10.44.77.253 Default password: admin
Network-wide configuration and management	Yes
Ruijie Reyee App management	Yes
eWeb management	Yes
Ruijie Cloud management	Yes
SNMP	Yes

Software Specifications

Model	RG-RAP62-OD
Configuration synchronization among the app, eWeb, and Ruijie Cloud	Yes
Displaying device information on Ruijie Cloud	Yes

Package Contents

Model	RG-RAP62-OD
Package Contents	
Package Contents	1 x AP 1 x Mounting bracket 1 x Cable tie 2 x Cross pan head screws (ST2.9 x 20 mm) 2 x Plastic expansion anchors (ϕ 5 x 24 mm) 1 x User Manual 1 x Warranty Card
Accessories	
Power adapter	No

Ruijie | ReYee

 **R**edefine your easy network



Ruijie Networks Co., Ltd.

Official Website: <https://Reyee.Ruijie.com>