

## AXIS F2135-RE Fisheye Sensor

Discreet fisheye sensor with 1080p

AXIS F2135-RE offers 1080p at 60 fps or 720p at 180 fps with AXIS F9111 Mk II, an excellent 185° field of view, and good low-light performance in color. It uses cables (up to 30 m/ 98 ft) from Axis with SMA-FAKRA connectors to withstand vibrations and ensure a ruggedized installation. Based on a divided network camera concept, it offers discreet installation and only a small sensor visible externally. Reliable under rough conditions, this ruggedized fisheye sensor unit can withstand temperatures as low as -40 °C and as high as 70 °C intermittently (-40 °F to 158 °F).

- > **Up to 60 fps at 1080p**
- > **Up to 180 fps at 720p**
- > **Excellent 185° field of view**
- > **Rugged sensor unit**
- > **IP66/IP67/IP6K9K-rated**



# AXIS F2135-RE Fisheye Sensor

## Camera

### Image sensor

1/2.8" progressive scan RGB CMOS

### Lens

1.98 mm, F2.0

#### For 1080p:

Horizontal field of view: 185°

Vertical field of view: 97°

#### For 720p:

Horizontal field of view: 120°

Vertical field of view: 62°

M12 mount, fixed iris

### Minimum illumination

Color: 0.1 lux

### Day and night

Fixed IR-cut filter

### Frame rate

Up to 60/50 fps (60/50 Hz) in 1080p and up to 180/175 fps (60/50 Hz) in 720p<sup>1</sup>

## General

### Casing

IP66-, IP67-, IP6K9K<sup>-2</sup>, NEMA 4X-rated

Aluminum

Color: black NCS S 9000-N

### Sustainability

PVC free

### Power

Typical 1 W, max 1.7 W

### Connectors

SMA connector

### Operating conditions

-40°C to 60 °C (-40°F to 140 °F)

Maximum temperature according to NEMA TS 2 (2.2.7): 74 °C (165 °F)

Start-up temperature: -40 °C (-40°F)

Humidity 10–100% RH (condensing)

### Storage conditions

-40 °C to 65 °C (-40 °F to 149 °F)

Humidity 5–95% RH (non-condensing)

### Approvals

#### EMC

EN 55032 Class A, EN 55035, EN 61000-6-1, EN 61000-6-2, FCC Part 15 Subpart B Class A, ICES-3(A)/NMB-3(A), VCCI Class A, RCM AS/NZS CISPR 32 Class A, KC KN32 Class A, KC KN35, EAC, ECE R10 rev.05 (E-mark)

#### Safety

IEC/EN/UL 62368-1, CAN/CSA C22.2 No. 62368-1, IEC/EN/UL 60950-22, CAN/CSA-C22.2 No. 60950-22, UN ECE R118

#### Environment

IEC 60068-2-1, IEC 60068-2-2, IEC 60068-2-14, IEC 60068-2-27, IEC 60068-2-64, IEC 60068-2-78, IEC TR 60721-4-5 Class 5M3 (vibration, shock), IEC/EN 60529 IP66/IP67, IEC/EN 61373 Category 1 Class B, NEMA 250 Type 4X, NEMA TS 2 (2.2.7-2.2.9), ISO 21207 (Method B), ISO 20653 IP6K9K

### Dimensions

46 mm (1.8 in)

ø 29.8 mm (1.2 in)

### Weight

50 g (0.1 lb)

### Required hardware

AXIS TU6004-E Cable, AXIS TU6005 Plenum Cable, AXIS F91 Main Unit

### Included accessories

Installation guide

### Optional accessories

For more accessories, see [axis.com](http://axis.com)

### Warranty

5-year warranty, see [axis.com/warranty](http://axis.com/warranty)

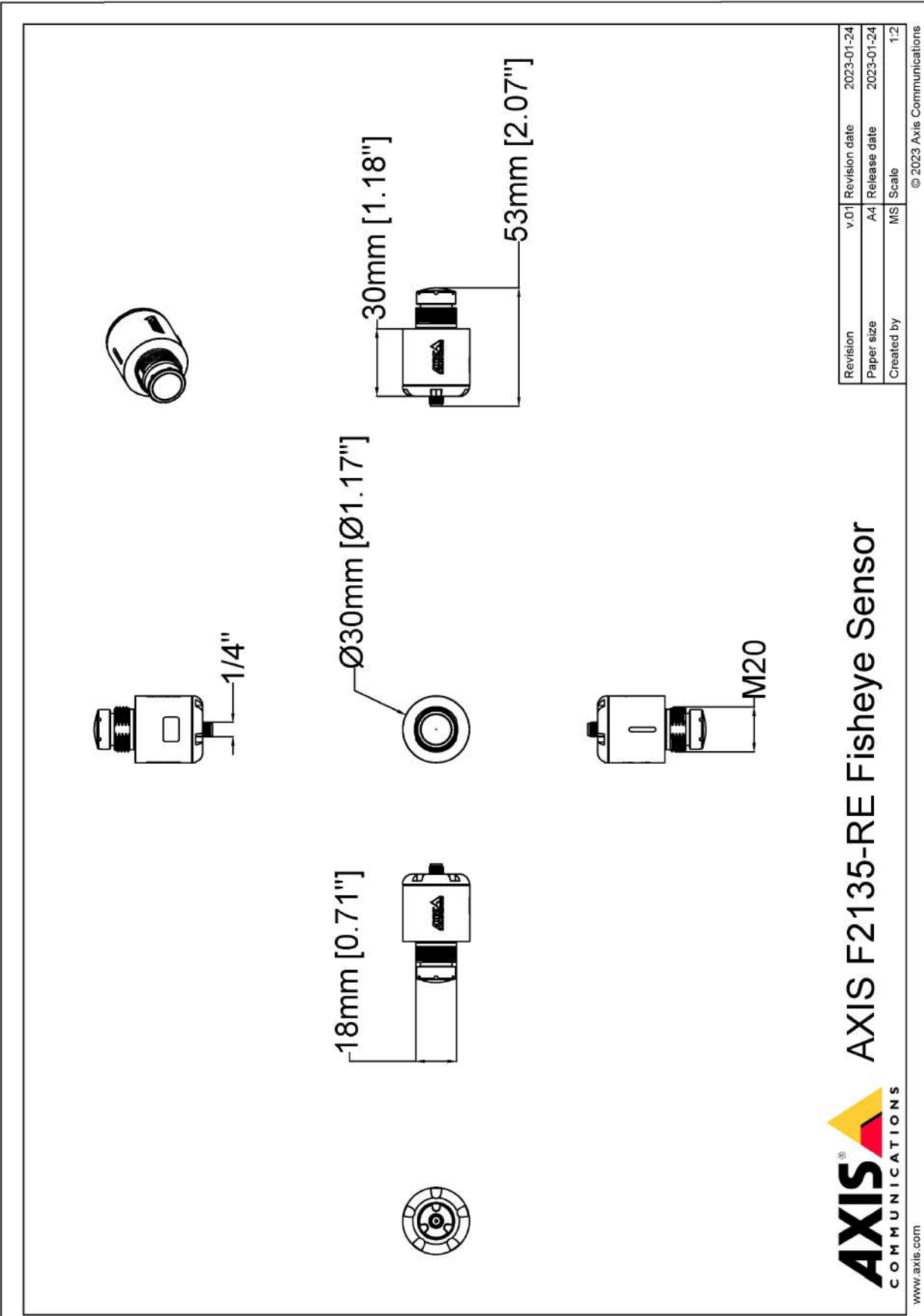
1. For sensor units and main units capture mode specifications, see capture mode table.  
2. In combination with a cable that has the same IP-rating

## Capture mode

Capture mode includes frame rate and shutter speed for the sensor unit in combination with different main units.

Main unit	Resolution	Exposure	Frame rate (fps) (60/50Hz)	Shutter speed (seconds)
AXIS F9111	1080p: 1920x1080	Without WDR	60/50	1/27000 to 1 s
		WDR	30/25	1/20000 to 1.5 s
	720p: 1280x720 <sup>3</sup>	Without WDR	180/175	1/32500 to 1/2 s
AXIS F9111-R Mk II	1080p: 1920x1080	Without WDR	60/50	1/43500 to 1 s
		WDR	30/25	1/20000 to 1.5 s
	720p: 1280x720 <sup>3</sup>	Without WDR	180/175	1/32500 to 1/2 s
AXIS F9114, AXIS F9114-B, AXIS F9104-B, AXIS F9114-R Mk II, AXIS F9114-B Mk II, AXIS F9104-B Mk II	1080p: 1920x1080	Without WDR	30/25	1/20000 s to 1 s
		WDR	30/25	1/20000 s to 1 s
	720p: 1280x720 <sup>3</sup>	Without WDR	60/50	1/32500 to 1/2 s

3. No WDR support. To get WDR, use 1080p: 1920x1080 and scale down.



Revision	v.01	Revision date	2023-01-24
Paper size	A4	Release date	2023-01-24
Created by	MS	Scale	1:2

© 2023 Axis Communications

**AXIS** COMMUNICATIONS  
**AXIS F2135-RE Fisheye Sensor**

www.axis.com