

## AXIS M1135-E Mk II Box Camera

Outdoor-ready 2 MP affordable surveillance.

This affordable, outdoor-ready camera is easy to install and operate. Enclosed in an IP66-, IK10- and NEMA 4X-rated casing, it supports PoE and redundant DC power to ensure your data is safeguarded in the event of a power outage. Featuring Axis Lightfinder and Axis Forensic WDR, it delivers true colors and great details in challenging light or near darkness. Plus, audio input lets you record video with sound. The camera's CS-mount enables flexibility for exchangeable lenses. With AXIS Object Analytics preinstalled, it's possible to detect and classify humans and vehicles. Furthermore, Axis Zipstream with H.264/H.265 significantly lowers bandwidth and storage requirements.

- > [Compact and flexible design](#)
- > [Lightfinder and Forensic WDR](#)
- > [Audio input](#)
- > [AXIS Object Analytics](#)
- > [Remote zoom and focus with i-CS](#)



# AXIS M1135-E Mk II Box Camera

## Camera

### Image sensor

Progressive scan RGB CMOS 1/2.9"

### Lens

Varifocal, IR corrected, CS-mount, DC-iris, 3–10.5 mm

Horizontal field of view: 90°–33°

Vertical field of view: 49°–19°

Minimum focus distance: 0.8 m (2.6 ft)

### i-CS

Varifocal, IR corrected i-CS lens, remote zoom and focus, P-iris control, 3.5–10 mm

Horizontal field of view: 101°–33°

Vertical field of view: 53°–18°

Minimum focus distance: 0.8 m (2.6 ft)

### Day and night

Automatically removable infrared-cut filter

### Minimum illumination

HDTV 1080p 25/30 fps with Forensic WDR and Lightfinder:

Color: 0.15 lux at 50 IRE, F1.4

B/W: 0.03 lux at 50 IRE, F1.4

Color: 0.1 lux at 30 IRE, F1.4

B/W: 0.02 lux at 30 IRE, F1.4

### Shutter speed

1/33500 to 2 s

## System on chip (SoC)

### Model

ARTPEC-7

### Memory

1024 MB RAM, 512 MB Flash

### Compute capabilities

Machine learning processing unit (MLPU)

## Video

### Video compression

H.264 (MPEG-4 Part 10/AVC) Baseline, Main and High Profiles

H.265 (MPEG-H Part 2/HEVC) Main Profile  
Motion JPEG

### Resolution

1920x1080 to 160x90

### Frame rate

Up to 25/30 fps in all resolutions

### Video streaming

Multiple, individually configurable streams in H.264, H.265 and Motion JPEG

Axis Zipstream technology in H.264 and H.265

Controllable frame rate and bandwidth

VBR/ABR/MBR H.264/H.265

Low latency mode

### Image settings

Axis Forensic WDR: up to 120 dB depending on scene, manual shutter time, compression, color, brightness, sharpness, contrast, white balance, exposure control (including automatic gain control), exposure zones, fine tuning of behavior at low light, aspect ratio correction, text and image overlay, privacy mask, mirroring of images

### Pan/Tilt/Zoom

Digital PTZ

## Audio

### Streaming

Audio in, simplex, two-way audio via edge-to-edge technology

### Encoding

24bit LPCM, AAC-LC 8/16/32/48 kHz, G.711 PCM 8 kHz, G.726 ADPCM 8 kHz, Opus 8/16/48 kHz

Configurable bit rate

### Input/output

External microphone input or line input, automatic gain control, network speaker pairing

## Network

### Network protocols

IPv4, IPv6 USGv6, ICMPv4/ICMPv6, HTTP, HTTP/2, HTTPS<sup>1</sup>, TLS<sup>1</sup>, QoS Layer 3 DiffServ, FTP, SFTP, CIFS/SMB, SMTP, mDNS (Bonjour), UPnP<sup>®</sup>, SNMP v1/v2c/v3 (MIB-II), DNS/DNSv6, DDNS, NTP, PTP, NTS, RTSP, RTP, SRTP/RTSPS, TCP, UDP, IGMPv1/v2/v3, RTCP, ICMP, DHCPv4/v6, ARP, SSH, LLDP, CDP, MQTT v3.1.1, Secure syslog (RFC 3164/5424, UDP/TCP/TLS), Link-Local address (ZeroConf)

## System integration

### Application Programming Interface

Open API for software integration, including VAPIX<sup>®</sup> and AXIS Camera Application Platform; specifications at [axis.com](https://axis.com)

One-click cloud connection

ONVIF<sup>®</sup> Profile G, ONVIF<sup>®</sup> Profile M, ONVIF<sup>®</sup> Profile S, and ONVIF<sup>®</sup> Profile T specification at [onvif.org](https://onvif.org)

### Event conditions

Audio: audio detection

Device status: IP address removed, network lost, new IP address, storage failure, system ready, (with i-CS: within operating temperature, above operating temperature, above or below operating temperature, below operating temperature)

Edge storage: recording ongoing, storage disruption

I/O: digital input, manual trigger, virtual input

MQTT subscribe

Scheduled and recurring: scheduled event

Video: day/night mode, live stream open, tampering

### Event actions

File upload via FTP, HTTP HTTPS, SFTP, network share and email

MQTT publish

Notification via email, HTTP, HTTPS, TCP

Video recording to edge storage, pre- and post-alarm video buffering, PTZ preset, guard tour, send video clip, send SNMP trap, day/night vision mode, WDR mode, status LED indicator, output port

### Built-in installation aids

Pixel counter, remote zoom and focus with i-CS

## Analytics

### Applications

#### Included

AXIS Object Analytics, AXIS Scene Metadata, AXIS Video Motion Detection, AXIS Live Privacy Shield, active tampering alarm

#### Supported

Support for AXIS Camera Application Platform enabling installation of third-party applications, see [axis.com/acap](https://axis.com/acap)

### AXIS Object Analytics

Object classes: humans, vehicles

Scenarios: line crossing, object in area

Up to 10 scenarios

Other features: triggered objects visualized with color-coded bounding boxes

Polygon include/exclude areas

Perspective configuration

ONVIF Motion Alarm event

### AXIS Scene Metadata

Object classes: humans, vehicles

Object attributes: confidence, position

## Approvals

### EMC

EN 55032 Class A, EN 61000-3-2, EN 61000-3-3, EN 55035, EN 61000-6-1, EN 61000-6-2

Australia/New Zealand: RCM AS/NZS CISPR 32 Class A

Canada: ICES-3(A)/NMB-3(A)

Japan: VCCI Class A

Korea: KS C 9832 Class A, KS C 9835

USA: FCC Part 15 Subpart B Class A

### Safety

CAN/CSA C22.2 No. 62368-1, IEC/EN/UL 62368-1,

CAN/CSA-C22.2 No. 60950-22, IEC/EN/UL 60950-22, IS 13252

### Environment

EN 50581, IEC 60068-2-1, IEC 60068-2-2,

IEC 60068-2-6, IEC 60068-2-14, IEC 60068-2-27,

IEC 60068-2-78, IEC/EN 60529 IP66,

NEMA 250 Type 4X, IEC/EN 62262 IK10,

NEMA TS 2 (2.2.7-2.2.9)

### Network

NIST SP500-267

1. This product includes software developed by the OpenSSL Project for use in the OpenSSL Toolkit. ([openssl.org](https://openssl.org)), and cryptographic software written by Eric Young ([ey@cryptsoft.com](mailto:ey@cryptsoft.com)).

## Cybersecurity

### Edge security

**Software:** Signed OS, brute force delay protection, digest authentication and OAuth 2.0 RFC6749 Client Credential Flow/OpenID Authorization Code Flow for centralized ADFS account management, password protection, Axis Cryptographic Module (FIPS 140-2 level 1), AES-XTS-Plain64 256bit SD card encryption  
**Hardware:** Axis Edge Vault cybersecurity platform Secure element (CC EAL 6+), Axis device ID, secure keystore, signed video, secure boot

### Network security

IEEE 802.1X (EAP-TLS, PEAP-MSCHAPv2)<sup>2</sup>, IEEE 802.1AE (MACsec PSK/EAP-TLS), IEEE 802.1AR, HTTPS/HSTS<sup>2</sup>, TLS v1.2/v1.3<sup>2</sup>, Network Time Security (NTS), X.509 Certificate PKI, host-based firewall

### Documentation

*AXIS OS Hardening Guide*

*Axis Vulnerability Management Policy*

*Axis Security Development Model*

AXIS OS Software Bill of Material (SBOM)

To download documents, go to [axis.com/support/cybersecurity/resources](https://axis.com/support/cybersecurity/resources)

To read more about Axis cybersecurity support, go to [axis.com/cybersecurity](https://axis.com/cybersecurity)

## General

### Casing

IP66- and NEMA 4X-rated, IK10 impact-resistant polymer enclosure  
Color: White NCS S 1002-B

### Sustainability

PVC free

### Power

Power over Ethernet (PoE) IEEE 802.3af/802.3at Type 1 Class 3, max 7.2 W, typical 4.5 W  
10–28 V DC, max 6.6 W, typical 4.4 W

### Connectors

RJ45 10BASE-T/100BASE-TX PoE  
Terminal block for one input and one output (12 V DC output, max load 25 mA)  
DC input, terminal block  
3.5 mm mic/line in

### Storage

Recording to network-attached storage (NAS)  
For SD card and NAS recommendations see [axis.com](https://axis.com)

### Operating conditions

-25 °C to 50 °C (-13 °F to 122 °F)  
Maximum temperature (intermittent): 55 °C (131 °F)  
Maximum temperature according to NEMA TS 2 (2.2.7) 74 °C (165 °F)  
Start-up temperature: -20 °C (-4 °F)  
Humidity 10–100% RH (condensing)

### Storage conditions

-40 °C to 65 °C (-40 °F to 149 °F)  
Humidity 5–95% RH (non-condensing)

### Dimensions

240 x 143 x 324 mm (9.5 x 5.6 x 12.8 in) including wall mount

### Weight

1.8 kg (4.0 lb) including wall mount

### Included accessories

AXIS T94Q01A Wall Mount, Torx® T20 screw driver, Torx® T30 screw bit, connector kit, installation guide, Windows® decoder 1-user license

### Optional accessories

AXIS T94R01P Conduit Back Box, AXIS T98A16-VE Surveillance Cabinet Series, AXIS T91B47 Pole Mount, AXIS T90B Illuminators, AXIS T8351 Mk II Microphone 3.5 mm

### Optional lenses

Computar 12.5–50 mm, DC-iris  
Lens CS 2.8–13 mm F1.4 DC-Iris 5 MP  
Lens Computar i-CS 2.8–8.5 mm

### Video management systems

Compatible with AXIS Camera Station Edge, AXIS Camera Station Pro, AXIS Camera Station 5, and video management software from Axis' partners available at [axis.com/vms](https://axis.com/vms).

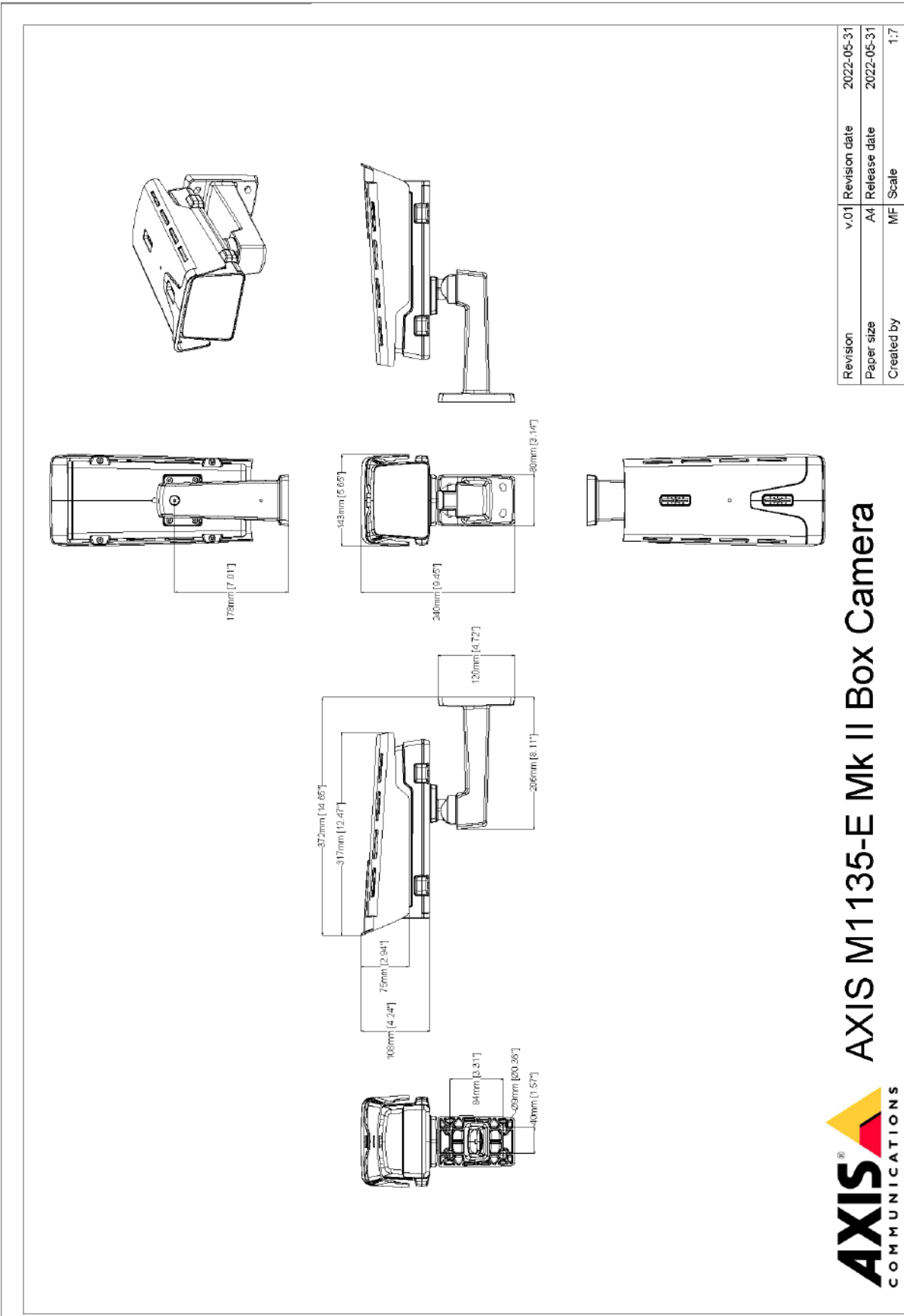
### Languages

English, German, French, Spanish, Italian, Russian, Simplified Chinese, Japanese, Korean, Portuguese, Polish, Traditional Chinese, Dutch, Czech, Swedish, Finnish, Turkish, Thai, Vietnamese

### Warranty

5-year warranty, see [axis.com/warranty](https://axis.com/warranty)

2. This product includes software developed by the OpenSSL Project for use in the OpenSSL Toolkit. ([openssl.org](https://openssl.org)), and cryptographic software written by Eric Young ([ey@cryptsoft.com](mailto:ey@cryptsoft.com)).



Revision	v.01	Revision date	2022-05-31
Paper size	A4	Release date	2022-05-31
Created by	MF	Scale	1:7

© 2022 Axis Communications

# AXIS M1135-E Mk II Box Camera



www.axis.com