

AXIS P5676-LE PTZ Camera

High-performance 4 MP PTZ with IR

This high-performance PTZ camera offers 4 MP image quality with 30x optical zoom and IR. Forensic WDR and Lightfinder 2.0 guarantee images with saturated colors and sharp details of moving objects even in challenging light or near darkness. It offers support for analytics and includes AXIS Object Analytics to detect and classify people and vehicles. This cost-effective camera includes built-in cybersecurity features to safeguard your system and prevent unauthorized access. Axis Zipstream with H.264/H.265 significantly lowers bandwidth and storage requirements. Furthermore, you can pop it into an AXIS Q6100-E using AXIS TP6902-E Adapter Bracket and enjoy 360° overview for total situational awareness.

- > **4 MP with 30x optical zoom**
- > **Forensic WDR, Lightfinder 2.0, IR Illumination**
- > **Support for advanced analytics**
- > **Built-in cybersecurity features**
- > **Zipstream with support for H.264/H.265**



AXIS P5676-LE PTZ Camera

Variants

AXIS P5676-LE 50 Hz
AXIS P5676-LE 60 Hz

Camera

Image sensor

1/2.9" progressive scan RGB CMOS

Lens

Varifocal, 4.5-135 mm, F1.6 - 4.6
Horizontal field of view: 57.1°- 2.1°
Vertical field of view: 34.4°- 1.2°
Minimum focus distance: 1.3 m (4.3 ft)
Autofocus, P-Iris control

Day and night

Automatically removable infrared-cut filter

Minimum illumination

Color: 0.1 lux at 30 IRE F1.6
B/W: 0.01 lux at 30 IRE F1.6
0 lux with IR illumination on
Color: 0.11 lux at 50 IRE F1.6
B/W: 0.03 lux at 50 IRE F1.6
0 lux with IR illumination on

Shutter speed

1/50000 s to 1/5 s with 50 Hz
1/62500 s to 1/5 s with 60 Hz

Pan/Tilt/Zoom

Pan: 360° endless, 0.1°- 350°/s
Tilt: 0-90°, 0.1°- 350°/s
Zoom: 30x optical, 12x digital, Total 360x zoom
256 preset positions, nadir flip, limited guard tour,
control queue, on-screen directional indicator, set new
pan 0°, focus recall, spot focus

System on chip (SoC)

Model

ARTPEC-7

Memory

1024 MB RAM, 512 MB Flash

Compute capabilities

Machine learning processing unit (MLPU)

Video

Video compression

H.264 (MPEG-4 Part 10/AVC) Baseline, Main and High Profiles
H.265 (MPEG-H Part 2/HEVC) Main Profile
Motion JPEG

Resolution

(16:9) 2688x1512 to 320x180

Frame rate

Up to 60/50 fps (60/50 Hz) in all resolutions

Video streaming

Multiple, individually configurable streams in H.264, H.265 and Motion JPEG
Controllable frame rate and bandwidth
Axis Zipstream technology in H.264 and H.265
VBR/ABR/MBR H.264/H.265
Low latency mode
Video streaming indicator

Image settings

Compression, saturation, brightness, sharpness, contrast, local contrast, white balance, exposure control, exposure zones, Forensic WDR: Up to 120 dB depending on scene, defogging, day/night shift level, tone mapping, fine tuning of low-light behavior, rotation: 0°, 180°, text and image overlay, image freeze on PTZ, electronic image stabilization, barrel distortion correction, 20 individual polygon and mosaic privacy masks, orientation aid PTZ, target aperture
Scene profiles: forensic, indoor, outdoor, traffic overview

Signal-to-noise ratio

>55 dB

Audio

Audio streaming

Two-way audio via network speaker pairing

Audio encoding

24bit LPCM, AAC-LC 8/16/32/48 kHz, G.711 PCM 8 kHz, G.726 ADPCM 8 kHz, Opus 8/16/48 kHz
Configurable bit rate

Audio input/output

External microphone input or line input, line output (Requires Axis 10-pin Push-pull System Connector or Axis Multicable C I/O Audio Power 1 m/5 m, not included), automatic gain control

Network

Security

IP address filtering, HTTPS¹ encryption, IEEE 802.1x (EAP-TLS)¹ network access control, user access log, centralized certificate management

Network protocols

IPv4, IPv6 USGv6, ICMPv4/ICMPv6, HTTP, HTTPS¹, HTTP/2, TLS¹, QoS Layer 3 DiffServ, FTP, SFTP, CIFS/SMB, SMTP, mDNS (Bonjour), UPnP[®], SNMP v1/v2c/v3 (MIB-II), DNS/DNSv6, DDNS, NTP, PTP, RTSP, RTCP, RTP, SRTP/RTSPS, TCP, UDP, IGMPv1/v2/v3, DHCPv4/v6, ARP, SSH, NTCIP, LLDP, CDP, MQTT v3.1.1, Secure syslog (RFC 3164/5424, UDP/TCP/TLS), Link-Local address (ZeroConf)

System integration

Application Programming Interface

Open API for software integration, including VAPIX[®], metadata and AXIS Camera Application Platform (ACAP); specifications at axis.com/developer-community.

One-click cloud connection

ONVIF[®] Profile G, ONVIF[®] Profile M, ONVIF[®] Profile S, and ONVIF[®] Profile T, specifications at onvif.org

Video management systems

Compatible with AXIS Camera Station Edge, AXIS Camera Station Pro, AXIS Camera Station 5, and video management software from Axis' partners available at axis.com/vms.

Event conditions

Audio: audio clip playing, audio detection
Device status: above operating temperature, above or below operating temperature, below operating temperature, fan failure, IP address removed, network lost, new IP address, PTZ power failure, storage failure, shock detected, system ready, within operating temperature
Edge storage: recording ongoing, storage disruption, storage health issues detected
I/O: digital input, manual trigger, virtual input
MQTT: subscribe
PTZ: PTZ malfunctioning, PTZ movement, PTZ preset position reached, PTZ ready
Scheduled and recurring: schedule
Video: average bitrate degradation, day-night mode, live stream open

Event actions

Audio clips: play, stop
Day-night mode
Guard tour
I/O: toggle I/O once, toggle I/O while the rule is active
IR illumination: turn on, use lights while the rule is active
MQTT: publish
Notification: HTTP, HTTPS, TCP and email
Overlay text
Preset positions
PTZ Autotracking: start temporary detection, toggle, toggle profile
Recordings: SD card and network share
SNMP trap messages: send, send while the rule is active
Upload of images or video clips: FTP, SFTP, HTTP, HTTPS, network share and email
WDR mode

Built-in installation aids

Pixel counter, leveling guide

Analytics

Applications

Included

AXIS Object Analytics, AXIS Scene Metadata
AXIS Video Motion Detection
Audio detection, active gatekeeper
Autotracker 2
Support for AXIS Camera Application Platform enabling installation of third-party applications, see axis.com/acap

1. This product includes software developed by the OpenSSL Project for use in the OpenSSL Toolkit. (openssl.org), and cryptographic software written by Eric Young (eay@cryptsoft.com).

AXIS Object Analytics

Object classes: humans, vehicles

Scenarios: line crossing, object in area, crossline counting, time in area

Up to 10 scenarios

Other features: triggered objects visualized with trajectories, color-coded bounding boxes and tables

Polygon include/exclude areas

Perspective configuration

ONVIF Motion Alarm event

AXIS Scene Metadata

Object classes: Classes: humans, faces, vehicles (types: cars, buses, trucks, bikes), license plates Confidence, position

Approvals

EMC

CISPR 35, CISPR 32 Class A, EN 55032 Class A, EN 55035, EN 50121-4, EN 61000-3-2, EN 61000-3-3, EN 61000-6-1, EN 61000-6-2

Canada: ICES-3(A)/NMB-3(A)

Japan: VCCI Class A

Korea: KS C 9835, KS C 9832 Class A

USA: FCC Part 15 Subpart B Class A

Safety

IEC/EN/UL 62368-1 ed. 3,

CAN/CSA C22.2 No. 62368-1 ed. 3, IEC 62471 risk group 2, IS 13252

Environment

IEC 60068-2-1, IEC 60068-2-2, IEC 60068-2-6, IEC 60068-2-14, IEC 60068-2-27, IEC 60068-2-78, IEC/EN 60529 IP66, IEC/EN 62262 IK10, NEMA 250 Type 4X, NEMA TS 2 (2.2.7-2.2.9), ISO 21207 (Method B)

Network

NIST SP500-267

Cybersecurity

ETSI EN 303 645, BSI IT Security Label, FIPS-140

Cybersecurity

Edge security

Software: Signed OS, brute force delay protection, digest authentication and OAuth 2.0 RFC6749 Client Credential Flow/OpenID Authorization Code Flow for centralized ADFS account management, password protection, Axis Cryptographic Module (FIPS 140-2 level 1), AES-XTS-Plain64 256bit SD card encryption

Hardware: Axis Edge Vault cybersecurity platform Secure element (CC EAL 6+), Axis device ID, secure keystore, signed video, secure boot

Network security

IEEE 802.1X (EAP-TLS, PEAP-MSCHAPv2)², IEEE 802.1AE (MACsec PSK/EAP-TLS), IEEE 802.1AR, HTTPS/HSTS², TLS v1.2/v1.3², Network Time Security (NTS), X.509 Certificate PKI, host-based firewall

Documentation

AXIS OS Hardening Guide

Axis Vulnerability Management Policy

Axis Security Development Model

AXIS OS Software Bill of Material (SBOM)

To download documents, go to axis.com/support/cybersecurity/resources

To read more about Axis cybersecurity support, go to axis.com/cybersecurity

General

Casing

IP66-, NEMA 4X- and IK10-rated

Polycarbonate (PC) casing

Color: white NCS S 1002-B, repaintable skin cover

For repainting instructions of casing and impact on warranty, contact your Axis partner.

Power

Camera consumption: typical 13 W, max 25.5 W

IEEE 802.3at Type 2 Class 4

Camera consumption: typical 13 W, max 29 W

IEEE 802.3bt Type 3 Class 6

Multiconnector:

20–28 V DC, typical 13 W, max 30 W

20–24 V AC, typical 20 VA, max 43 VA

(High PoE midspan or power supply not included)

Features: power meter

2. This product includes software developed by the OpenSSL Project for use in the OpenSSL Toolkit. (openssl.org), and cryptographic software written by Eric Young (ey@cryptosoft.com).

Connectors

RJ45 10BASE-T/100BASE-TX PoE

RJ45 push-pull connector (IP66) included

With Axis 10-pin push-pull system connector or Axis multicable C I/O audio power 1 m/5 m (not included):

I/O connector for DC or AC input, 4 configurable alarm

Inputs/outputs: mic in/line in, line out

IR illumination

Optimized IR with power-efficient, long-life 850 nm IR LEDs

With 30 W midspan: Range of reach 200 m (656 ft) or more depending on the scene. The range is temporarily reduced during PTZ movements.

Storage

Support for SD/SDHC/SDXC card

Support for SD card encryption (AES-XTS-Plain64 256bit)

Recording to network-attached storage (NAS)

For SD card and NAS recommendations see axis.com

Operating conditions

-30 °C to 50 °C (-22 °F to 122 °F)

Maximum temperature according to NEMA TS 2 (2.2.7): 74 °C (165 °F)

Start-up temperature: -30 °C

Humidity 10–100% RH (condensing)

Storage conditions

-40 °C to 65 °C (-40 °F to 149 °F)

Humidity 5–95% RH (non-condensing)

Dimensions

Height: 242 mm (9.53 in)

∅ 205 mm (8.1 in)

Weight

2.5 kg (5.5 lb)

Included accessories

RJ45 Push-pull plug (IP66), installation guide,

Windows® decoder 1-user license

Optional accessories

AXIS TP6902-E Adapter Bracket, AXIS T91B mounts,

AXIS T8154 60 W SFP Midspan, outdoor RJ45 cable,

Axis 10-pin Push-Pull System Connector, Axis

Multicable C I/O Audio Power 1 m/5 m

For more accessories, see axis.com

Languages

English, German, French, Spanish, Italian, Russian, Simplified Chinese, Japanese, Korean, Portuguese, Traditional Chinese, Dutch, Czech, Swedish, Finnish, Turkish, Thai, Vietnamese

Warranty

5-year warranty, see axis.com/warranty

Sustainability

Substance control

PVC free

RoHS in accordance with EU RoHS Directive 2011/65/EU/ and EN 63000:2018

REACH in accordance with (EC) No 1907/2006. For SCIP UUID, see echa.europa.eu

Materials

Renewable carbon-based plastic content: 22% (recycled)

Screened for conflict minerals in accordance with OECD guidelines

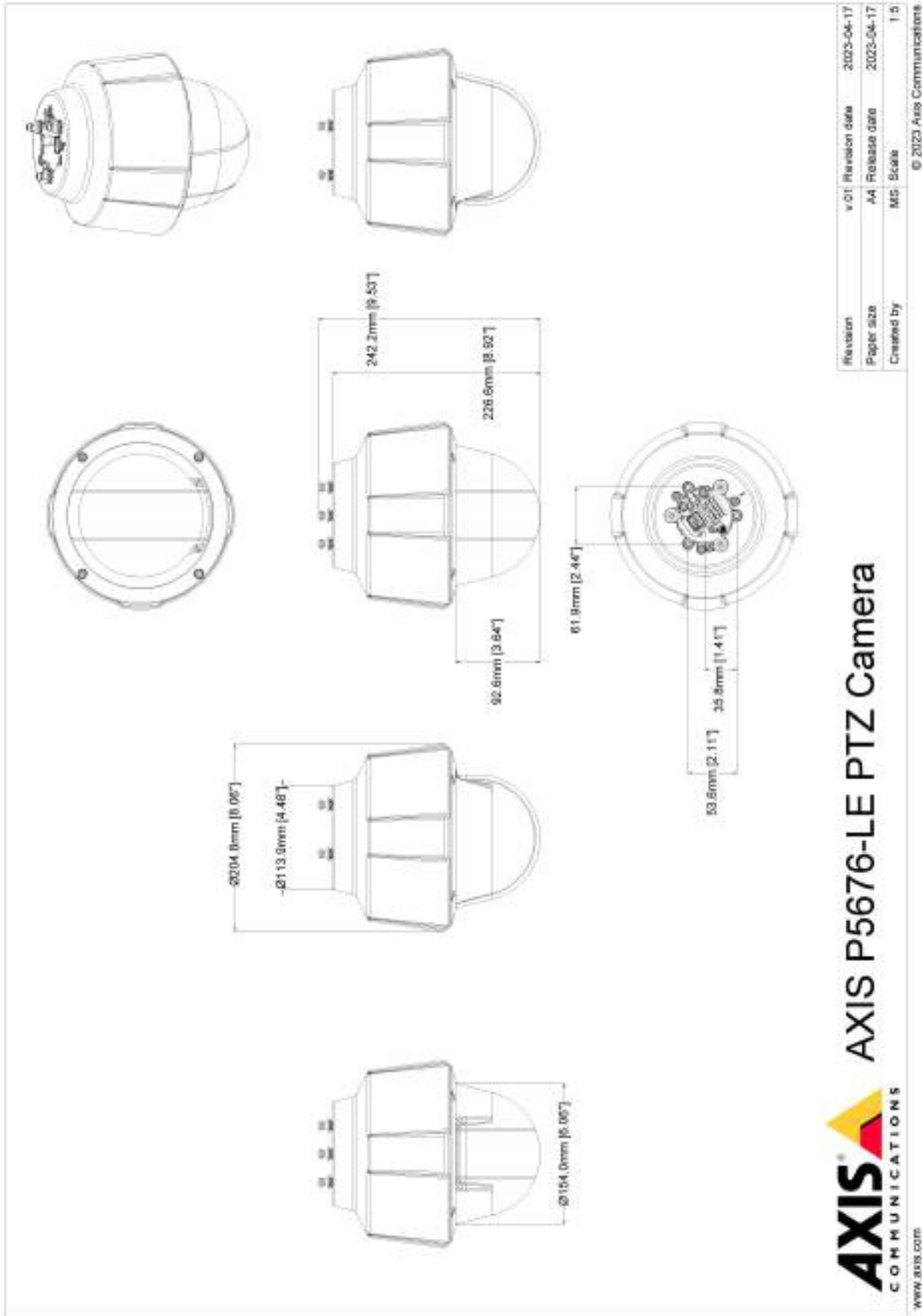
To read more about sustainability at Axis, go to axis.com/about-axis/sustainability

Environmental responsibility

axis.com/environmental-responsibility

Axis Communications is a signatory of the UN Global Compact, read more at unglobalcompact.org

Dimension drawing



AXIS[®] COMMUNICATIONS
AXIS P5676-LE PTZ Camera