

## AXIS M1055-L Box Camera

Cost-effective HDTV 1080p with deep learning

Offering an IR-corrected lens, this compact, easy-to-install camera delivers professional-quality video both day-and-night. It features a tally LED to indicate video streaming or recording. And AXIS Live Privacy Shield makes it easy to remotely monitor activities while protecting privacy. A deep learning processing unit enables advanced features and powerful analytics based on deep learning on the edge. Additionally, built-in cybersecurity features prevent unauthorized access and safeguard your system. For instance, Axis Edge Vault protects your Axis device ID and simplifies authorization of Axis products on your network

- > [Day-and-night with IR illumination](#)
- > [Built-in privacy features](#)
- > [AXIS Object Analytics preinstalled](#)
- > [I/O port with 1 input/1 output](#)



# AXIS M1055-L Box Camera

## Camera

### Image sensor

1/2.9" progressive scan RGB CMOS

### Lens

Fixed focal length, 3.16 mm, F2.0  
Horizontal field of view: 103°  
Vertical field of view: 55°  
Fixed iris, IR corrected

### Day and night

Automatically removable infrared-cut filter

### Minimum illumination

Color: 0.18 lux at 50 IRE, F2.0  
B/W: 0.04 lux at 50 IRE, F2.0  
0 lux with IR illumination on

### Shutter speed

1/19000 s to 1/5 s

## System on chip (SoC)

### Model

CV25

### Memory

1024 MB RAM, 512 MB Flash

### Compute capabilities

Deep learning processing unit (DLPU)

## Video

### Video compression

H.264 (MPEG-4 Part 10/AVC) Main and High Profiles  
H.265 (MPEG-H Part 2/HEVC) Main Profile  
Motion JPEG

### Resolution

1280x960 to 320x240 (4:3)  
1920x1080 to 640x360 (16:9)

### Frame rate

Up to 25/30 fps (50/60 Hz) with H.264 and H.265<sup>1</sup> in all resolutions

### Video streaming

Multiple, individually configurable streams in H.264, H.265, and Motion JPEG  
Axis Zipstream technology in H.264 and H.265  
Controllable frame rate and bandwidth  
VBR/ABR/MBR H.264/H.265

### Image settings

Saturation, contrast, brightness, sharpness, WDR: up to 120 dB depending on the scene, white balance, day/night threshold, exposure mode, exposure zones, compression, rotation: 0°, 90°, 180°, 270° including corridor format, mirroring, dynamic overlay, polygon privacy masks

## Network

### Network protocols

IPv4, IPv6 USGv6, ICMPv4/ICMPv6, HTTP, HTTPS<sup>2</sup>, HTTP/2, TLS<sup>2</sup>, QoS Layer 3 DiffServ, FTP, SFTP, CIFS/SMB, SMTP, mDNS (Bonjour), UPnP<sup>®</sup>, SNMP v1/v2c/v3 (MIB-II), DNS/DNSv6, NTP, PTP, NTS, RTSP, RTCP, RTP, SRTP/RTSPS, TCP, UDP, IGMPv1/v2/v3, DHCPv4/v6, SSH, LLDP, MQTT v3.1.1, Secure syslog (RFC 3164/5424, UDP/TCP/TLS), Link-Local address (ZeroConf)

## System integration

### Application Programming Interface

Open API for software integration, including VAPIX<sup>®</sup>, metadata and AXIS Camera Application Platform (ACAP); specifications at [axis.com/developer-community](https://axis.com/developer-community).  
One-click cloud connection  
ONVIF<sup>®</sup> Profile G, ONVIF<sup>®</sup> Profile M, ONVIF<sup>®</sup> Profile S, and ONVIF<sup>®</sup> Profile T, specification at [onvif.org](https://onvif.org)

### Onscreen controls

Privacy masks  
Media clip  
IR illumination

1. Reduced frame rate in Motion JPEG

2. This product includes software developed by the OpenSSL Project for use in the OpenSSL Toolkit. ([openssl.org](https://openssl.org)), and cryptographic software written by Eric Young ([ey@cryptsoft.com](mailto:ey@cryptsoft.com)).

## Event conditions

Device status: above operating temperature, above or below operating temperature, below operating temperature, IP address removed, live stream active, network lost, new IP address, system ready, within operating temperature  
Edge storage: recording ongoing, storage disruption, storage health issues detected  
I/O: digital input is active, digital output is active, manual trigger, virtual input is active  
MQTT: subscribe  
Scheduled and recurring: schedule  
Video: average bitrate degradation, day-night mode, tampering

---

## Event actions

Day-night mode: use day-night mode while the rule is active  
I/O: toggle I/O once, toggle I/O while the rule is active  
Illumination: use lights, use lights while the rule is active  
Images: FTP, HTTP, HTTPS, SFTP, email and network share  
MQTT: publish  
Notification: HTTP, HTTPS, TCP and email  
Overlay text: use overlay text, use overlay text while the rule is active  
Recordings: record video, record video while the rule is active  
SNMP trap messages: send, send while the rule is active  
Status LED: flash status LED, flash status LED while the rule is active  
Video clips: FTP, HTTP, HTTPS, SFTP, email and network share  
WDR mode: set WDR mode, set WDR mode while the rule is active

## Analytics

### Applications

#### Included

AXIS Object Analytics, AXIS Scene Metadata, AXIS Video Motion Detection, AXIS Live Privacy Shield, active tampering alarm

#### Supported

Support for AXIS Camera Application Platform enabling installation of third-party applications, see [axis.com/acap](https://axis.com/acap)

---

## AXIS Object Analytics

**Object classes:** humans, vehicles (types: cars, buses, trucks, bikes)

**Scenarios:** line crossing, object in area, crossline counting, occupancy in area

Up to 10 scenarios

**Other features:** triggered objects visualized with color-coded bounding boxes

Polygon include/exclude areas

Perspective configuration

ONVIF Motion Alarm event

---

## AXIS Scene Metadata

**Object classes:** humans, faces, vehicles (types: cars, buses, trucks, bikes), license plates

**Object attributes:** vehicle color, upper/lower clothing color, confidence, position

## Approvals

### EMC

EN 55032 Class A, EN 55035, EN 61000-6-1, EN 61000-6-2

**Australia/New Zealand:** RCM AS/NZS CISPR 32 Class A

**Canada:** ICES-3(A)/NMB-3(A)

**Japan:** VCCI Class A

**Korea:** KS C 9832 Class A, KS C 9835

**USA:** FCC Part 15 Subpart B Class A

---

### Safety

CAN/CSA C22.2 No. 62368-1 ed. 3,

IEC/EN/UL 62368-1 ed. 3, IEC 62471 (exempt), IS 13252

---

### Environment

IEC 60068-2-1, IEC 60068-2-2, IEC 60068-2-6,

IEC 60068-2-14, IEC 60068-2-27, IEC 60068-2-78

---

### Network

NIST SP500-267

---

### Cybersecurity

ETSI EN 303 645, BSI IT Security Label

## Cybersecurity

### Edge security

**Software:** Signed OS, brute force delay protection, digest authentication and OAuth 2.0 RFC6749 Client Credential Flow/OpenID Authorization Code Flow for centralized ADFS account management, password protection, AES-XTS-Plain64 256bit SD card encryption

**Hardware:** Axis Edge Vault cybersecurity platform Secure element (CC EAL 6+), system-on-chip security (TEE), Axis device ID, secure keystore, signed video, secure boot, encrypted filesystem (AES-XTS-Plain64 256bit)

### Network security

IEEE 802.1X (EAP-TLS, PEAP-MSCHAPv2)<sup>3</sup>, IEEE 802.1AE (MACsec PSK/EAP-TLS), IEEE 802.1AR, HTTPS/HSTS<sup>3</sup>, TLS v1.2/v1.3<sup>3</sup>, Network Time Security (NTS), X.509 Certificate PKI, host-based firewall

### Documentation

*AXIS OS Hardening Guide*

*Axis Vulnerability Management Policy*

*Axis Security Development Model*

AXIS OS Software Bill of Material (SBOM)

To download documents, go to [axis.com/support/cybersecurity/resources](https://axis.com/support/cybersecurity/resources)

To read more about Axis cybersecurity support, go to [axis.com/cybersecurity](https://axis.com/cybersecurity)

## General

### Casing

Aluminum and plastic casing

Color: white NCS S 1002-B

### Sustainability

PVC and BFR/CFR free, 70% recycled plastics

### Power

Power over Ethernet (PoE) IEEE 802.3af/802.3at Type 1 Class 2

Typical 2.2 W, max 4.3 W

### Connectors

Network: Shielded RJ45 10BASE-T/100BASE-TX PoE  
I/O: 4-pin 2.5 mm terminal block for 1 alarm input and 1 output (12 V DC output, max load 25 mA)

### IR illumination

Optimized IR with power-efficient, long-life 850 nm IR LED

Range of reach 18 m (59 ft) or more depending on the scene

### Storage

Support for microSD/microSDHC/microSDXC card

Support for SD card encryption (AES-XTS-Plain64 256bit)

For SD card and NAS recommendations see [axis.com](https://axis.com)

### Operating conditions

0 °C to 35 °C (32 °F to 95 °F)

Humidity 10–85% RH (non-condensing)

### Storage conditions

-40 °C to 65 °C (-40 °F to 149 °F)

Humidity 5–95% RH (non-condensing)

### Dimensions

105 x 60 x 93 mm (4.1 x 2.4 x 3.7 in)

### Weight

137 g (0.30 lb)

### Included accessories

Installation guide, Windows® decoder 1-user license, wall mount, terminal block connector

### Optional accessories

AXIS T8415 Wireless Installation Tool

AXIS Surveillance Cards

For more accessories, see [axis.com](https://axis.com)

### Video management systems

Compatible with AXIS Camera Station Edge, AXIS Camera Station Pro, AXIS Camera Station 5, and video management software from Axis' partners available at [axis.com/vms](https://axis.com/vms).

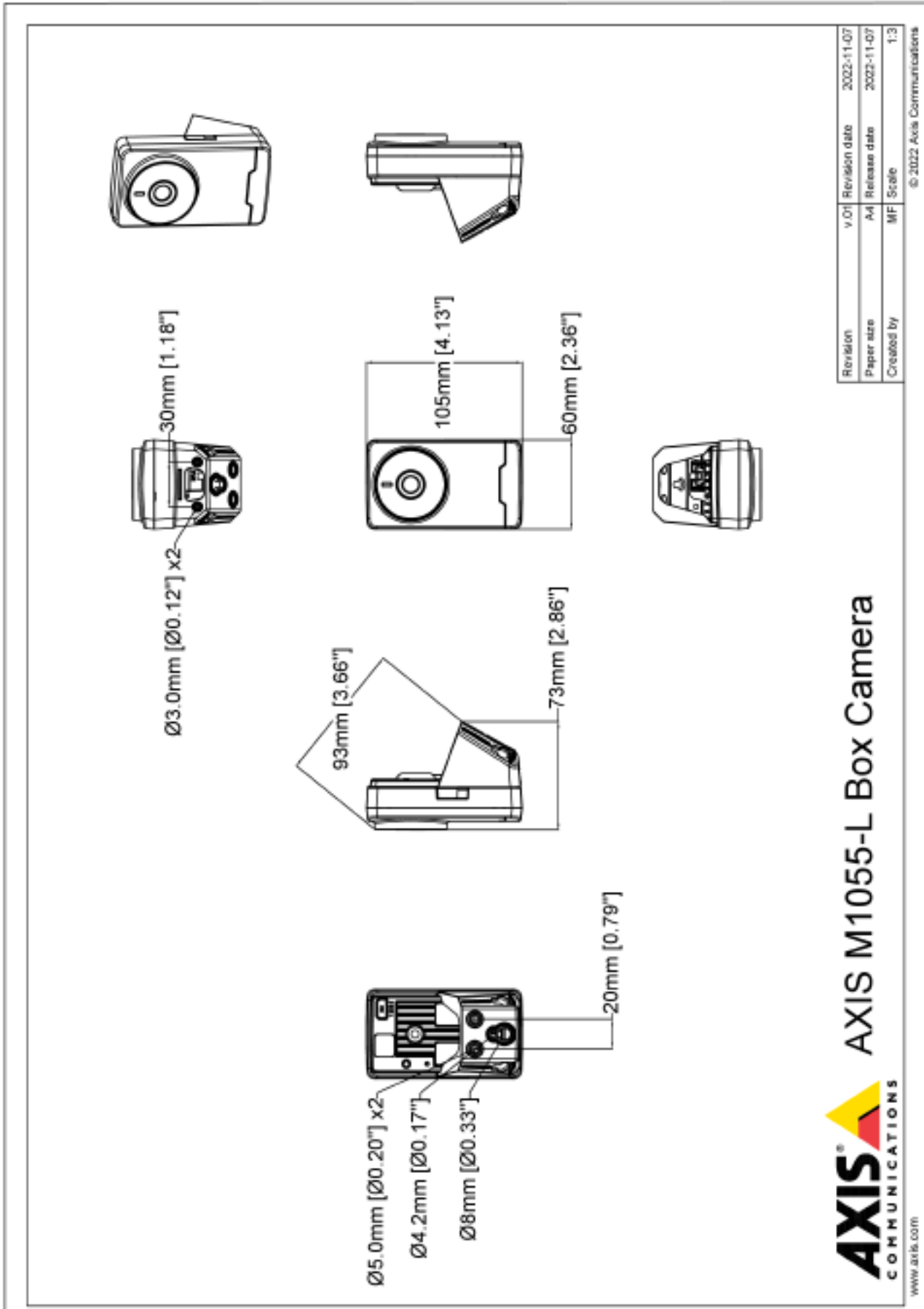
### Languages

English, German, French, Spanish, Italian, Russian, Simplified Chinese, Japanese, Korean, Portuguese, Polish, Traditional Chinese, Dutch, Czech, Swedish, Finnish, Turkish, Thai, Vietnamese

### Warranty

5-year warranty, see [axis.com/warranty](https://axis.com/warranty)

3. This product includes software developed by the OpenSSL Project for use in the OpenSSL Toolkit. ([openssl.org](https://openssl.org)), and cryptographic software written by Eric Young ([eay@cryptsoft.com](mailto:eay@cryptsoft.com)).



**AXIS**<sup>®</sup> COMMUNICATIONS  
www.axis.com  
**AXIS M1055-L Box Camera**